

**LOEWE.**



**Loewe Technology GmbH**

Industriestraße 11  
96317 Kronach  
Germany

Technical changes and delivery options are subject to change without notice. The product portfolio may be different and might vary depending on the country. Service matters are all handled individually. All Loewe products are sold at a price recommended by Loewe Technology GmbH.

loewe.tv     

Loewe 12/2022  
99.006.516

Loewe catalogue 12/2022

A Century of Excellence.

**LOEWE.**

A Century  
of Excellence.

100 years  
1923 - 2023



**LOEWE.**

A Century  
of Excellence.

**LOEWE.**



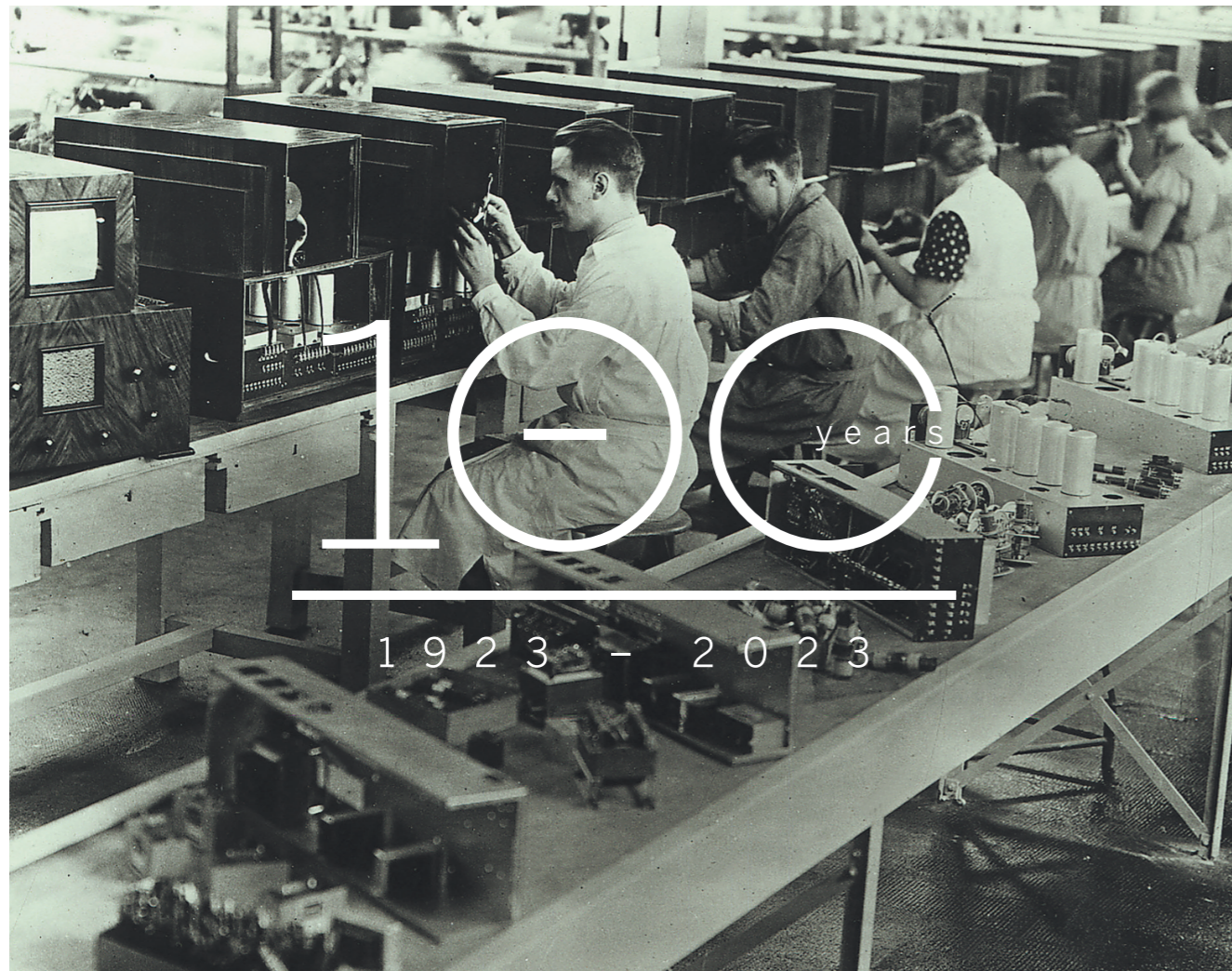
Loewe bild i, Loewe klang bar3 mr, Loewe klang mr3, Loewe klang mr1

# 100 years of history

Tradition at Loewe.  
Always reinventing itself.



For a century, Loewe has stood for inventive spirit and luxury home cinema experiences. From its founding in 1923 to the invention of the television in 1931, Loewe has developed into a traditional company with worldwide operations and is now active in 35 countries with its high-quality, elegant TV and audio products.



From the inventor of television to a global,  
traditional company.



The global brand Loewe looks back with passion and pride on an extraordinary power of innovation, tradition and perfect craftsmanship Made in Germany.

Loewe's history began in 1923 when Siegmund and David Ludwig Loewe founded the company in Berlin. At the time, they probably had no idea that their groundbreaking vision would have a decisive influence on the history of entertainment: Their invention of the first television set marked the beginning of a new era in the entire entertainment culture

After the opening of the production facility in Kronach in 1948, Loewe impressed the world with pioneering achievements in modern television and audio. In the decades to come, Loewe advanced to become one of the leading global specialists for high-quality consumer electronics.

The traditional manufactory and the high-tech production lines in Kronach in Upper Franconia continue to be the heart of the Loewe brand. This is how sustainable high-tech products par excellence are created.





Loewe bild i, Loewe klang bar5 mr, Loewe klang sub5

## Philosophy

Versatile innovations.  
Unique passion.

We love to enhance our customers' everyday experiences with unique high-tech appliances and to give discerning connoisseurs pleasure with our products every day.

This is why tireless commitment and perfect craftsmanship flow into the creation of our new products. This applies to both the company and the Loewe brand. Because only in this way can we create the highest quality, outstanding design and perfect product experiences with every innovation, time and time again.

## Vision & Values

The epitome of luxury.

Loewe is dedicated to give every product a meaning. A story. A purpose. In dedicated precision work, we want to anchor Loewe as the epitome of luxurious technical products par excellence.

The perfect interplay of technical masterpieces and outstanding design icons is awarded on a regular basis by press and design awards.

---

# Loewe. Made in Germany.

---

Kronach, Germany - a place where extraordinary innovative power, impressive tradition and perfect craftsmanship come together to produce technically sophisticated, unique masterpieces. We create and develop every Loewe product in Germany and almost our entire television portfolio is „Made in Germany“. At the same time, Loewe has remained true to its handcrafted production method in the manufactory at its headquarters in Kronach.

Each set is manufactured with attention to detail and is individually calibrated for naturally brilliant colours through precise fine-tuning and tested under the strictest quality criteria. Ultimate cinema feeling, excellent detail, vivid movements, outstanding colour fidelity and impressive sound quality are only a touch of a button away.

As vivid as real life.  
Excellent OLED colour reproduction.

Thrillers, football highlights or nature documentaries with excellent details, velvety smooth motions and brilliant colours fidelity from the first moment you switch on: The 4K OLED display is optimised for every Loewe iconic, bild s, bild v and bild i to ensure everything appears absolutely authentic and true to life.

The pre-calibrated 4K OLED displays with their rich, deepest OLED black based on self-illuminating pixels guarantee breath-taking contrasts and enormous picture depths: experience your movies and series as authentically and realistically as never before.

Loewe <b>iconic</b>	10
Loewe <b>bild s</b>	12
Loewe <b>bild v</b>	14
Loewe <b>bild i</b>	16
Loewe <b>bild c</b>	18



Loewe **bild v**

Loewe **iconic**

# A sculpture for your eyes and ears.

Perfection of form – Made in Germany.

Everything but ordinary.  
Made of stone.



State-of-the-art TV technology.  
Picture quality Made in Germany.

An impressive combination of television and front-firing soundbar in a setup solution that, in addition to excellent TV and audio technology Made in Germany, impresses above all with its unique design: with its sculptural, coherent design language, the Loewe iconic sets strong accents and new standards for luxury-class home entertainment. The setup solution of the Loewe iconic is handcrafted from the material Syno-Stone. Syno-Stone is a solid mineral material, which is robust and durable and yet feels as heavy and cool as stone. Available in the colour Graphite Grey, the smooth, robust and solid Syno-Stone is perfect for supporting the TV set and soundbar with ease.

Exclusive colour variant.  
For the perfect living ambience.

At the same time, the Loewe iconic impresses with its sweeping and elegant design language. Discover an absolutely trend-setting design classic from the Loewe manufactory at its headquarters in Kronach.

The timeless design icon is available in the SL5 and SL7 chassis versions and with high-quality OLED displays in 55" and 65" sizes. The powerful sound bar with integrated subwoofers is attractively and discreetly integrated behind a high-quality fabric panel. Thanks to precisely calibrated colours and tones ex works, you enjoy artfully arranged TV and audio quality and thus an ultra-realistic, impressive picture and sound experience.

Loewe **bild s**

# The ultimate star. For the big show.

As vivid as real life: excellent OLED colour reproduction.

Pure magic.  
Integrated soundbar.

Sounds right and sounds great.  
Mimi Sound Personalization™.

A truly impressive star appeal.  
Luxurious design.

Don't miss a anything.  
dr+, two-channel system and dual tuner.

Maximum of privacy and data security.  
Easy-TV mode.

Extremely flexible.  
Motorised set-up solution.



Fiction becomes reality:  
Thanks to Dolby Vision™.

With its impressive 196 cm screen, the Loewe bild s.77 brings the ultimate 4K OLED TV into your living room. The breathtaking design of the Loewe giant with a 77" display completely reinterprets the OLED flat screen - a born star that makes a grand entrance into any upscale interior.

Switch your TV on and enjoy:  
pre-set cinema mode.

Manually manufactured in Germany and precisely calibrated for perfect colour reproduction, this XXL Loewe TV offers an excellent, unrivalled picture and sound quality. Ultra-HD resolution, state-of-the-art HDR technology (HDR10, HLG, Dolby Vision), two-channel system, integrated dr+ hard disc, dual tuner for all reception paths, the integrated soundbar and a 4K streaming box from Apple ensure pure luxury home cinema. Experience the big show with the Loewe bild s.77 and enjoy films, series or TV programmes in a new entertainment dimension.





Loewe **bild v**

# Timeless classic for highest demands.



Simply better.  
Pre-calibrated cinema mode.

Record and watch later.  
dr+, dual tuner and two-channel system.

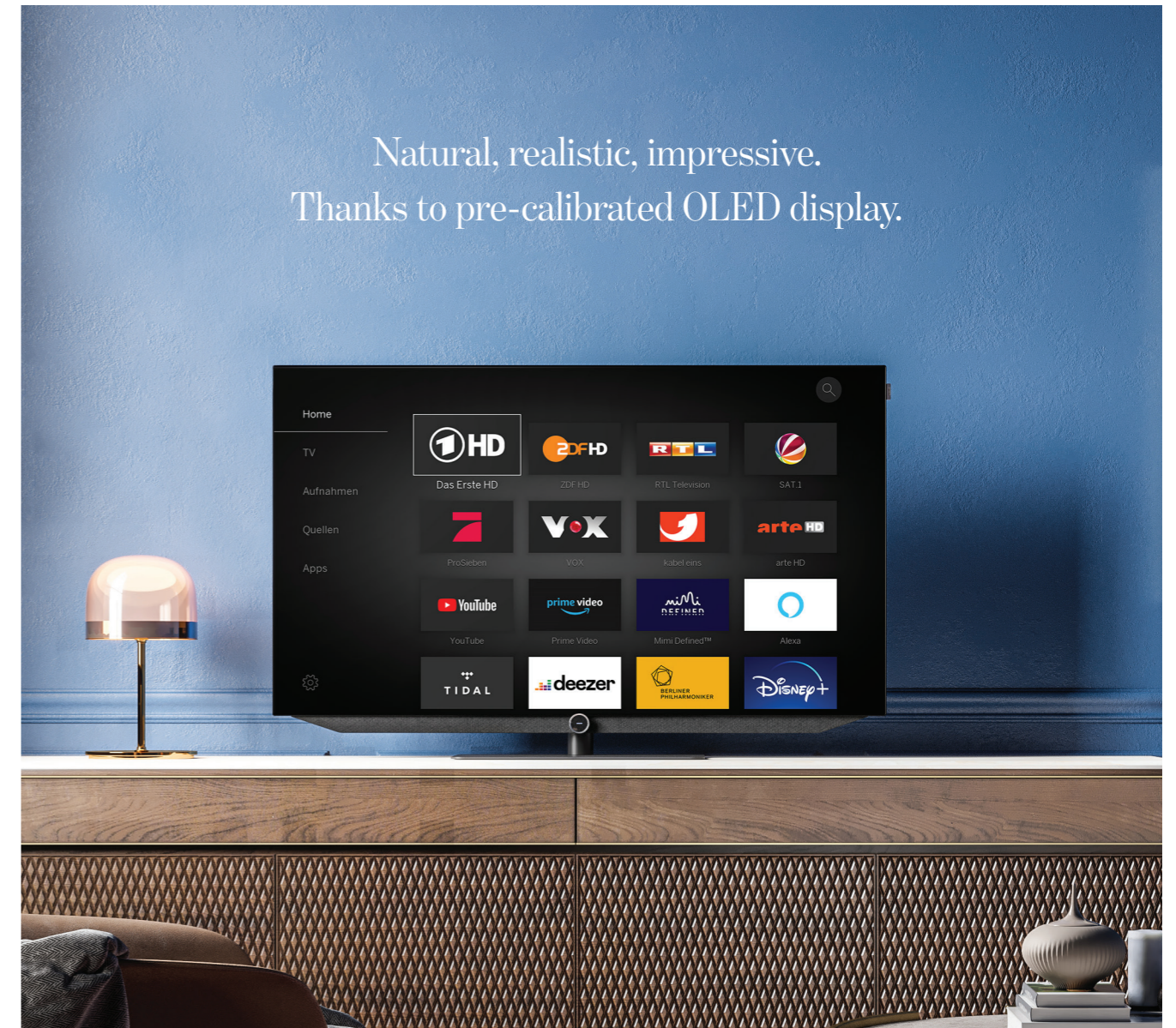
Stereo sound with power.  
Impressive audio.

Excellent sound experience.  
With Mimi Sound Personalization™.

Timeless elegance.  
Classic Loewe design.

Your data, your privacy.  
Even more secure with Easy-TV mode.

Natural, realistic, impressive.  
Thanks to pre-calibrated OLED display.



Within your reach.  
Due Dolby Vision™.

Precision work Made in Germany: manufactured on a hightech production line at our Kronach headquarters, the ultrahigh-resolution 4K OLED Loewe bild v is already calibrated at the factory, so you enjoy excellent picture quality from the moment you switch it on. This timeless classic impresses with a sophisticated picture and sound experience thanks to the latest HDR technology (HDR10, HLG, Dolby Vision), integrated stereo soundbar and 48", 55" or 65" screen. Absolutely convenient

and quick to operate, the Loewe bild v scores with its extensive technology equipment - including a dual tuner for all reception modes and the two-channel system.

Thanks to the highest quality of workmanship and Loewe's typical minimalist design, experience a thrilling home cinema that fits perfectly into any upscale living environment.



Loewe **bild i**

# Modern all-rounder for smart entertainment.

Extraordinary. Due to pre-calibrated picture quality.

Don't miss anything: integrated dr+ hard disk.

Always the best sound: flexible sound solutions.

Modern home cinema: stylish 360° design.

Harmonious and unique design.



## The world of streaming. Discover natively with Loewe os7.

Ready for Smart TV with an ultra-high resolution 4K OLED display with 48", 55" or 65" screen: the Loewe bild i is our modern all-rounder for the best entertainment via the Internet. Whether watching TV, using video-on-demand, browsing media libraries, listening to music, surfing the Internet or accessing online streaming services - your entertainment program can be conveniently controlled via the Smart TV platform or by voice command.

Hand-built in Germany and equipped with innovative HDR technology (HDR10, HLG, Dolby Vision™), a voluminous, flexible sound system and integrated dr+ hard drive, the Loewe bild i impresses with an unmistakable symbiosis of tradition and modernity combined with the highest quality.

## True to life. With Dolby Vision™.

The Loewe multi-talent presents itself as a stylish, minimalist design statement and at the same time offers a magical picture and sound experience.

The Loewe bild i is optionally available together with the powerful Loewe soundbar klang bar i, which impresses with powerful front-firing stereo sound from eight integrated drivers generating 80 watts of total music power. With this high-quality sound bar, you benefit from clear dialogues and a pleasant listening experience even at low volumes. Its compact build matches the design of the Loewe bild i perfectly - enhancing every living space.



Loewe **bild c**

# Compact without compromises. The Loewe smart TV.

Fiction becomes reality thanks to Dolby Vision™. (43" only)

Highest flexibility: versatile options for connection.

Powerful entertainment: balanced 3D sound.

Compact, elegant design: perfect for smaller rooms.



Boundless entertainment:  
Loewe os7 smart TV platform.



## Authentic colour experience: perfected Edge LED panel.

Maximum functionality in a compact housing: thanks to versatile, technically perfected features, the Loewe bild c presents itself as a space-saving smart TV. The 43" Edge LED panel, the Smart TV platform, the 4K UHD resolution and the HDR picture processing with Dolby Vision™, and much more, ensure first-class picture quality.

Experience smart TV of the most convenient kind in the blink of an eye. In seconds, you can use the Loewe bild c to access streaming services such as Netflix, Amazon-Prime or Disney+, YouTube or even media libraries directly.

The integrated sound bar with front-firing speakers with 60 watt total music power carries the sound optimally into any room and impresses with excellent speech intelligibility. With its discreet size and minimalist design, this compact TV model blends seamlessly into any upscale interior and fits perfectly into smaller rooms such as bedrooms or kitchens.



Loewe **plus**

# Set-up solutions for every living space.



Perfectly positioned.

The Loewe set-up solutions adapt to any interiors, so each TV can be perfectly integrated into different living environments. Whether wall mounts, table or floor solutions - with our set-up options, everyone will find the perfectly individual solution.

Which set-up solution matches with which Loewe television can be taken from the data sheets. A glimpse of Loewe's beautiful set-up solutions can be found here:



**Loewe floor stand flex**



**Loewe floor2ceiling stand**



**Loewe floor stand motor s.77**



**Loewe floor stand motor v**



**Loewe wall mount slim 432**



**Loewe wall mount slim 221**



**Loewe wall mount universal**

---

# Innovative inhouse design.

---

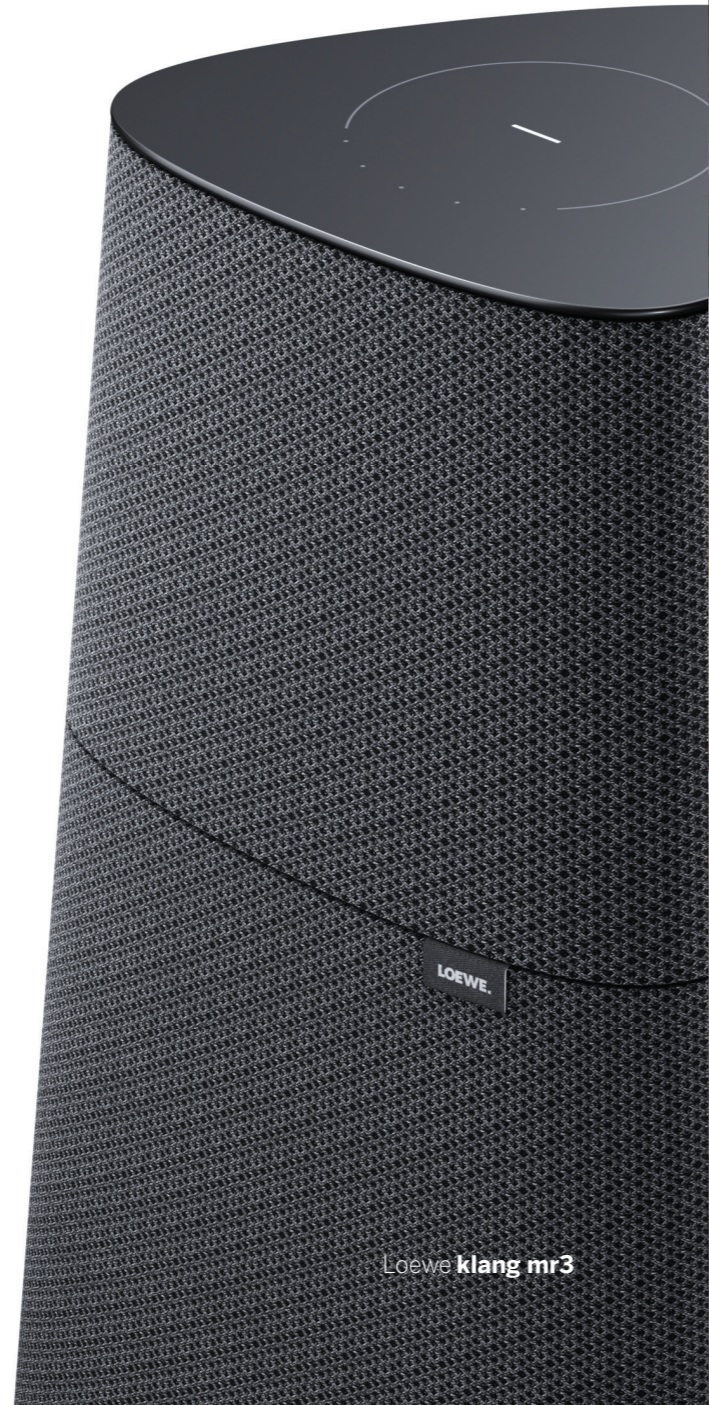
Design is firmly anchored in the Loewe DNA. Timeless, highly functional and aesthetically minimalist are the attributes of the Loewe design philosophy that underlie the work of our experienced industrial designers in our design centre.

Excellent design is what drives us. For us, design is more than just a part of our corporate strategy. Loewe design is our pride and joy. This is why we receive several prestigious design awards such as the Red Dot Design Award or the iF Design Award from renowned experts every year.

Thought out down to the smallest detail and made for absolute durability, new design icons are continuously created in Kronach. Classic design features such as the Loewe eye or the Loewe flag are merged into innovative, creative interpretations which provide magical moments in the everyday lives of our technology- and design-savvy customers..



reddot winner 2022



Loewe **klang mr3**



Loewe **iconic**



Loewe bild i, Loewe klang bar5 mr & Loewe klang sub5, Loewe klang mr5, Loewe klang mr1

---

# Audio enjoyment. Engineered in Germany.

---

The unforgettable 360° entertainment experience is rounded off by Loewe audio products. Engineered in Germany, the audio products are developed, tested and continuously optimised for a natural sound sensation by in-house technical specialists. This is how the sound professionals from Loewe regularly fascinate experts and sound enthusiasts.

Whether it's voluminous 360-degree soundbars, powerful TV subwoofers, multi-room speakers or smart radios: every single audio product goes through a meticulous development process in which every aspect is put through its paces. Whether it's the aesthetic fabric cover specially developed for speakers, unique wireless connection technologies or designs that save up to 50 percent of space - every Loewe audio product is a master of its trade.

## For your home cinema.

Create your own personal home cinema with Loewe TV and audio products: combine your favourite soundbar, multi-room speaker and subwoofer with your TV and create a sound stage in your home that is second to none. Enjoy immersive 360-degree sound as if you were in the middle of the action - or listen to your favourite music across multiple rooms with our convenient Multiroom solutions.

Loewe <b>klang bar5 mr &amp; klang sub5</b>	26
Loewe <b>klang bar3 mr</b>	28
Loewe <b>klang sub1</b>	30
Loewe <b>klang mr</b>	32
Loewe <b>klang s</b>	34

Loewe **klang bar5 mr & klang sub5**

# Realistic surround sound of the third dimension.

Don't miss a word.  
Superior speech quality.

The pure joy of sound.  
Vibration-free subwoofer.

Versatile.  
Streaming & multiroom setup.

Expandable without limits.  
HDMI & Auto Remote Control Sync.

Stylish living ambience.  
Elegant and compact design.

Perfect to combine.  
Ideal with Loewe klang mr.



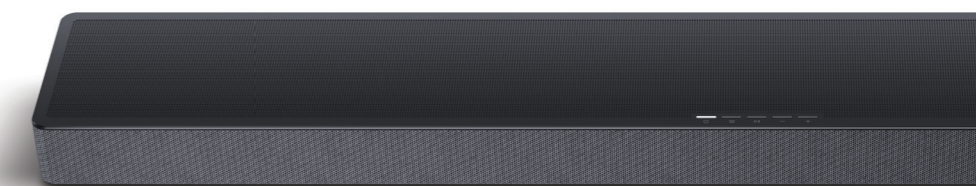
Authentic 3D audio experience.  
Dolby Atmos.

The ultimate multiroom sound system for your home is guaranteed by the Loewe soundbar klang bar5 mr with 440 watt of total music power with the klang sub5 subwoofer with 360 watt of total music power and extension options of multiple wireless speakers. This true Loewe all-rounder offers premium cinema sound as well as versatile music streaming with just one device, while the compact, space-saving design blends seamlessly into any room.

The 5.1.2 Dolby Atmos and DTS:X technology ensure a fascinatingly realistic 3D sound experience as in the cinema.

Powerful entertainment.  
Captivating sound.

Equipped with DTS Play-Fi, Google Chromecast and Apple AirPlay 2, the soundbar and subwoofer are instantly pairable with other devices, which makes it easy to stream music from any source. This as well as the elegant, timeless Loewe look elevate the set to an absolute must-have for music and film enthusiasts. Two up firing plus two side firing speakers guarantee realistic 3D surround sound by reflections from the wall and ceiling. The two left and right center speakers, the harmonic tuned subwoofer with two 6-inch active speakers, four passive radiators and 800 watts of total music power provide additional power and put you in the middle of action.



Loewe **klang bar3 mr**

## Powerful sound giant.

Upgrade to a 5.1 system.  
Wireless with three centre speakers.

Classic sound enjoyment.  
AVR connection function.

Echo-free 3D sound experience.  
Best WDAL 2.0 technology.

Audio enjoyment everywhere.  
Thanks to multi-room functionality.



### Powerful. 3.1 System Engineered in Germany.

The all-rounder among the soundbars: The powerful 3.1 soundbar Loewe klang bar3 mr shines with an all-round package for almost every area of application. On its own, the device shines with 360 watts of total music power as well as an excellent 3D sound experience thanks to Dolby Atmos. Enjoy immersive, echo and delay-free 360-degree sound with first-class speech intelligibility and voluminous cinema sound, thanks to a forward-facing left, right and centre speaker supported by two integrated subwoofers.

German engineering enables the klang bar3 mr to connect additional front and rear speakers via wireless and latency-free WDAL 2.0 technology (Loewe Wireless Digital Audiolink 2.0). Adding front speakers, the klang bar3 mr then switches the left and right speakers to centre speakers, enabling even better speech intelligibility. Thanks to the AVR connections there is no need for an additional, expensive adapter if older Loewe

and thirdbrand active speakers or active amplifiers, which require a cable connection, shall be integrated into the sound system. Do you prefer audio enjoyment in all your rooms? That is no problem with the Loewe klang bar3 mr either. Thanks to the Multiroom function the device couples wirelessly with the Loewe klang mr across different rooms.





Perfect audio upgrade.  
Strong without vibrations.  
The German art of engineering.



---

Loewe **klang sub1**

## Compact powerhouse. The first subwoofer with wireless TV connection.

---

Maximum compatibility.  
For almost all TVs.

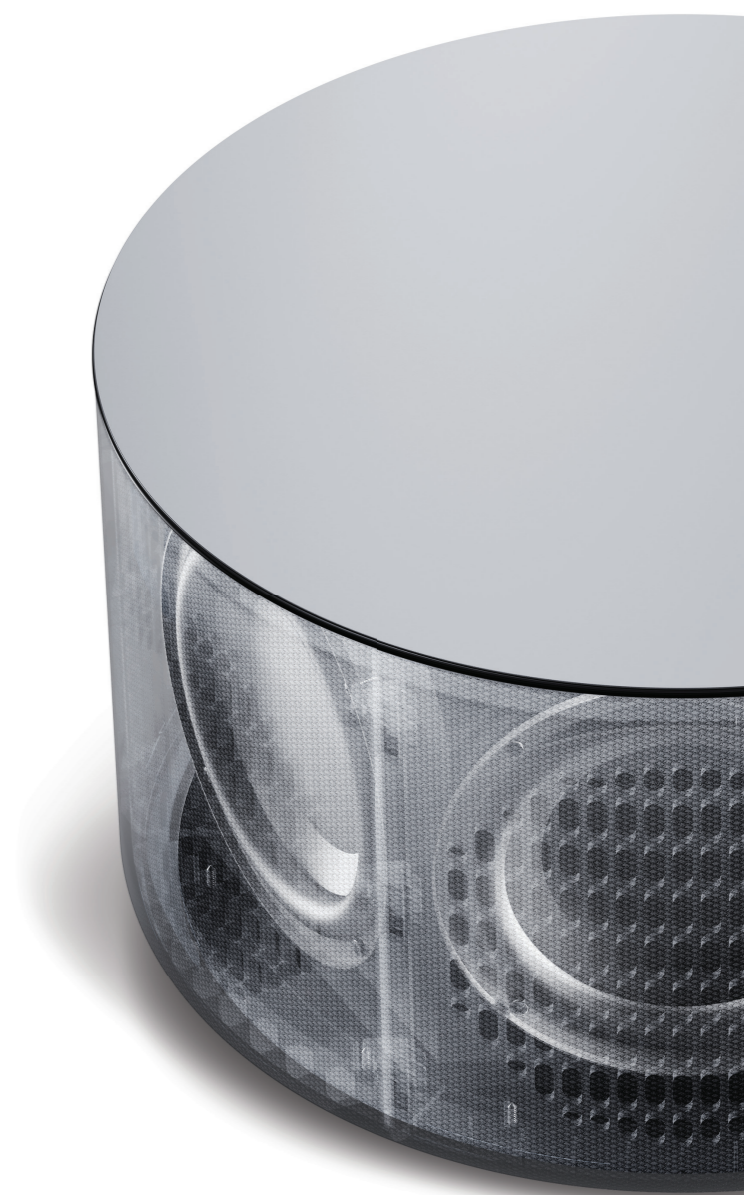
Wireless sound enjoyment.  
Latency-free Bluetooth pairing.

Instant audio enjoyment.  
Simplest plug-and-play.

Dynamic and powerful.  
Upgrade to a 2.1 system.

Discover a 2.1 audio system with full bass due to 160 watt of total music power for a more dynamic sound. The unique feature of latency-free Bluetooth connection allows you to pair the compact subwoofer with your TV. The result is a perfectly balanced sound experience for maximum listening pleasure without sound delay, annoying buzzing and disturbing wires between the subwoofer and TV.

Due to the simplest plug-and-play installation, the Loewe klang sub1 is immediately ready for use with any Loewe television from the SL3 series onwards – for the ultimate in audio enjoyment. Small size, big performance: thanks to the innovative audio technology inside, the Loewe klang sub1 is only half the size of devices with a conventional subwoofer design. This means that this space-saving powerhouse fits perfectly into smaller living rooms without any kind of vibration. By the way, if you own a non-Loewe TV with a regulated audio output, it is possible to connect the Loewe klang sub1 to it.



---

Loewe **klang mr**

# Pure wireless audio enjoyment in all rooms.

---

Unlimited music enjoyment. HD sound & access to streaming services.

Save and play your favorites with a simple tap on the glass touch panel.

Simple voice control. With Smart Home.

A pleasure for all senses. Timeless minimalist design.

Wireless multichannel connectivity. WDAL 2.0.

Room-filling sound experience due to integrated subwoofer (klang mr3 / klang mr5 only)



Fascinating home cinema.  
Loewe sound system connectivity.

## Multiple music streaming in any room. With DTS Play-Fi for easy music streaming.

Enjoy the total audio experience – anytime, in any room and always with breathtaking sound. The Loewe klang mr1, klang mr3 and klang mr5 multiroom speakers stream in high resolution with 30, 150, and 180 watts of total music power. Musical pleasure wherever you want it.

Whether music, podcasts, audio books from streaming services, Internet radio or your own playlists, let yourself be inspired by wireless playback with one or more speakers connected via your network and Bluetooth and excellent sound quality. With your new multiroom system, you can experience outstanding sound ambience in every corner of your home thanks to the satisfyingly simple, harmonious interaction of several speakers. They are also the perfect complement for the Loewe klang bar5 mr. The high-quality design of the Loewe klang mr multiroom speakers is thereby made for a sophisticated living ambience.



---

Loewe **klang s**

# Unique sound experience for most diverse audio demands.

---

Full digital music variety  
thanks to Internet streaming.

Sensual listening experience.  
DAB+ and powerful sound.

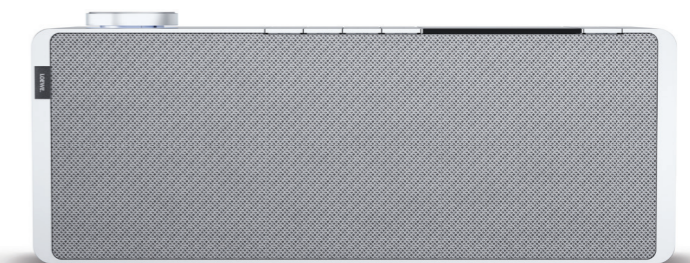
Stylish addition to the living room.  
Distinctive design.

Comfortable operation from anywhere.  
With 3.2" display or app.

Even more music enjoyment.  
Integrated CD drive. (klang s3 only)



Whether listening to the radio from international and local stations, streaming music services or playing playlists, the compact Loewe klang s1 and klang s3 internet radios with DAB/DAB+ tuner, USB-MP3 playback and 80/120 watts of total music power never fails to impress. The outstanding network and Bluetooth speakers as well as the latest state-of-the-art technology create a distinctive and captivating sound experience. Moreover, the extraordinary design of this luxurious sound classic blends seamlessly into an upscale living ambience and inspires discerning music lovers.





Loewe bild 1 | Loewe klang bar5 mr & klang sub5 | Loewe klang mrl

---

## Our way to sustainability.

---

We are committed to producing beautifully designed, highly functional, modern and timeless objects. By selecting the finest, highest-quality materials, Loewe creates sustainable products with careful precision work that impress with energy efficiency, software updates as well as years of reparability, thus underlining our sustainability concept.

Not only Loewe products but also their packaging protect the environment: sustainable cardboard boxes and cloth bags instead of plastics help to conserve resources. Packaging studies made of wood are already pointing the way to the future.

Through the expansion of its production activities in Kronach including an high-tech production line, Loewe is underpinning its regional roots in Upper Franconia. We are thus making a significant contribution strengthening a significant sector of the economy in the region. The conscious selection of regional suppliers ensures short transport routes for many materials and thus more sustainable production. This effect is further enhanced by the use of 100% green electricity.



---

## The Loewe service promise.

---

For Loewe, service does not end with the purchase: customers can rely on comprehensive service solutions at all times. Our detailed online based FAQ will help you with short questions anytime.

Since sustainability is a big part of Loewe's DNA, Loewe's own technical repair shop is able to repair products up to ten years of age - depending on the model and the fault of the unit. A deliberately generous stock of spare parts makes it possible.

In addition regular software updates keep Loewe products state-of-the-art technology.

Of course, our certified specialist dealers are also happy to support you with your concerns: whether it's product selection, set-up and furnishing service, questions about the product before and after purchase, or support on the subject of warranty and repair - you can rely on our Loewe specialist dealers.

We will be happy to help you.

[helpline@loewe.de](mailto:helpline@loewe.de)

## Technical Information

Loewe iconic	iconic v.65	iconic v.55	iconic i.65	iconic i.55
<b>Image</b>				
Resolution (in pixels)	Ultra HD (3840 x 2160)	Ultra HD (3840 x 2160)	Ultra HD (3840 x 2160)	Ultra HD (3840 x 2160)
Display technology	OLED (WRGB Pixel)	OLED (WRGB Pixel)	OLED (WRGB Pixel)	OLED (WRGB Pixel)
Screen diagonal (in cm/inch) / Response time (in ms)	164 / 65 / 1	139 / 55 / 1	164 / 65 / 1	139 / 55 / 1
Peak luminance (in cd/m²) / Viewing angle (h/v)	800 / 120 °	800 / 120 °	800 / 120 °	800 / 120 °
Ultra HD scaling / Image+ Active / Adaptive Contrast / 24p	●/●/—/●	●/●/—/●	●/—/●/●	●/—/●/●
HDR (HLG / HDR10 / Dolby Vision™) / WCG	●/●/●/●	●/●/●/●	●/●/●/●	●/●/●/●
Video auto-dimming (VBD+) / Interior auto-dimming (OPC)	—/●	—/●	—/●	—/●
<b>Reception</b>				
DVB-T2/C/S2 HD / Multi ATV / Unicable / Dual Channel	● <sup>1A</sup> /●/●/●	● <sup>1A</sup> /●/●/●	● <sup>1B</sup> /●/●/—	● <sup>1B</sup> /●/●/—
MPEG / MPEG2 / MPEG4 (H.264) / HEVC (H.265)	●/●/●/●	●/●/●/●	●/●/●/●	●/●/●/●
Sat over IP / DVB-C over IP	●/●	●/●	—/—	—/—
DVB radio	●	●	●	●
<b>Audio</b>				
Output in watts (sine / music) / driver (active + passive)	180 / 360 / 9	180 / 360 / 9	180 / 360 / 9	180 / 360 / 9
Acoustic speaker concept	klang bar3 mr	klang bar3 mr	klang bar3 mr	klang bar3 mr
Magic moment / front firing / down firing / 2-channel crossover	—/●/—/● active	—/●/—/● active	—/●/—/● active	—/●/—/● active
Dolby: Audio / Digital / Digital Plus / Atmos / DTS: HD	via bild v: ●/●/●/—/—	via bild v: ●/●/●/—/—	via bild i: ●/●/●/●/●	via bild i: ●/●/●/●/●
Class-D amp / Automatic Volume Control (AVC) / Mimi S. P.	via bild v: ●/●/●	via bild v: ●/●/●	via bild i: ●/●/—	via bild i: ●/●/—
Individual bass and treble control / Loudness	via bild v: ●/●	via bild v: ●/●	via bild i: 7-Band EQ / —	via bild i: 7-Band EQ / —
Audio out control: variable / fixed / Subwoofer	via bild v: ●/●/●	via bild v: ●/●/●	via bild i: —/●/●	via bild i: —/●/●
<b>Operation</b>				
Loewe chassis / os / home screen (incl. favorites)	SL5 / os6 / ●	SL5 / os6 / ●	SL7 / os7 / ●	SL7 / os7 / ●
Loewe app / VIDAA app / my Loewe app (all: Android + iOS)	●/—/●	●/—/●	—/●/●	—/●/●
Voice control by Alexa skills / Vidaa voice	●/—	●/—	●/●	●/●
Electronic Program Guide / EPG key word search	●/●	●/●	●/—	●/—
Mediatext (HbbTV) / Teletext / page memory	●/●/ 2.000	●/●/ 2.000	●/●/ 792	●/●/ 792
Menu languages / Context related help	● <sup>2A</sup> /●	● <sup>2A</sup> /●	● <sup>2B</sup> /●	● <sup>2</sup> /●
Parental Lock / Automatic turn-off / Timer	●/●/●	●/●/●	●/●/●	●/●/●
Instant Channel Zapping / Quick Start Mode	●/●	●/●	—/●	—/●
Number of stations in channel list incl. AV and radio	6.000	6.000	10.000	10.000
PIP (AV) <sup>3</sup> / Full PIP / Splitscreen TV:Videotext	●/●/●	●/●/●	—/—/●	—/—/●
Software update (via USB / Internet)	●/●	●/●	●/●	●/●
Hotel Mode (Standard / CEC / IP / RS232)	●/●/●/●	●/●/●/●	●/—/—/—	●/—/—/—
<b>Multimedia</b>				
Loewe dr+: storage capacity in GB / USB recording / timeshift	1.000 / ●/●	1.000 / ●/●	1.000 / ●/●	1.000 / ●/●
Loewe dr+: streaming server / client / follow-me	●/●/●	●/●/●	—	—
Multi Recording / Mobile Recording / Radio Recording	●/●/●	●/●/●	—	—
Photo player / Music player / Video player <sup>4</sup>	●/●/●	●/●/●	●/●/●	●/●/●
Digital Media Renderer (incl. Ultra HD) / Bluetooth music player	●/●	●/●	●/●	●/●
Internet apps / Internet browser / Internet radio	●/●/● (incl. search)	●/●/● (incl. search)	●/●/● (via app)	●/●/● (via app)
YouTube / Amazon prime video / Netflix / Disney+	●/●/—/—	●/●/—/—	●/●/●/●	●/●/●/●
<b>Connectivity and Interfaces</b>				
HDMI 2.0b / HDMI 2.1 <sup>5</sup>	4 x HDMI 2.0b	4 x HDMI 2.0b	4 x HDMI 2.1	4 x HDMI 2.1
HDCP 2.2 / HDMI-CEC / ARC / eARC	●/●/●/—	●/●/●/—	●/●/●/●	●/●/●/●
USB / Bluetooth / Screen Mirroring (Miracast)	3 (2 x USB 3.0) / ●/●	3 (2 x USB 3.0) / ●/●	4 (2 x USB 3.0) / ●/●	4 (2 x USB 3.0) / ●/●
LAN network connection / WLAN (Wi-Fi) integrated	●/●	●/●	●/●	●/●
Antenna IEC socket / satellite F socket	1 / 2	1 / 2	1 / 1	1 / 1
Common Interface / CI Plus (CI+) 1.4 ECP certified <sup>6</sup>	2	2	1	1
Home Control: IP / RJ12 (RS232C) / IR-Link <sup>7</sup> / MU motor control	●/●/●/●	●/●/●/●	—	—
Digital audio: optical TOSLINK / Mini TOSLINK / ARC / eARC	—/●/●/—	—/●/●/—	—/●/●/●	—/●/●/●
Analogue audio out variable / fix (jack 3.5 mm)	●/●	●/●	—/●	—/●
Center speaker in (via adapter cable) / Cube connector stereo	●/—	●/—	—/●	—/●
Kensington anti theft lock	●	●	●	●
<b>Energy</b>				
EPREL registration No.: <a href="https://eprel.ec.europa.eu/qr">https://eprel.ec.europa.eu/qr</a>	via bild v.65	via bild v.55	via bild i.65	via bild i.55
Power switch / Mains voltages	● / 220-240V, 50/60 Hz	● / 220-240V, 50/60 Hz	● / 220-240V, 50/60 Hz	● / 220-240V, 50/60 Hz
Ambient Brightness Control	●	●	●	●
WoLAN / WoWLAN / Fast Power-On (with increased consumption)	●/●/—	●/●/—	●/●/—	●/●/—
<b>Dimensions</b>				
Weight (approx.) in kg incl. standard setup solution	83,3	70,1	82,3	68,7
W* x H x D (approx.) in cm incl. table stand (* incl. signature flag)	152,3 x 113,7 x 31,8 (floor stand)	130,0 x 101,3 x 31,8 (floor stand)	152,3 x 113,7 x 31,8 (floor stand)	130,0 x 101,3 x 31,8 (floor stand)
<b>Scope of Delivery</b>				
Speaker	klang bar3 mr	klang bar3 mr	klang bar3 mr	klang bar3 mr
Setup Solution / rotate-able	floor stand iconic / fix	floor stand iconic / fix	floor stand iconic / fix	floor stand iconic / fix
Remote control (incl. batteries)	Loewe assist alu silver (2x AAA)	Loewe assist alu silver (2x AAA)	Loewe remote alu silver (2x AAA)	Loewe remote alu silver (2x AAA)
Manual / power cord	●/● (2,5 m)	●/● (2,5 m)	●/● (2,5 m)	●/● (2,5 m)
Others	Fire TV 4K Max (DE only), multi power	Fire TV 4K Max (DE only), multi power	multi power extension	multi power extension

● = included/installed — = not included / possible

<sup>1A</sup> Reception of DVB-T2 HD is available in selected countries. Reception of digital channels may be limited by individual regulations from the respective broadcaster/provider.

<sup>1B</sup> Reception of DVB-T2 HD is available in selected countries. Reception of digital channels may be limited by individual regulations from the respective broadcaster/provider. UK models are Freeview HD compliant.

<sup>2A</sup> de - en - fr - it - es - nl - cs - el - pl - hu - fi - sl - sk - tr - sv - da - pt - ru - no - zh - ko - hr - sr - he

<sup>2B</sup> bs - cs - da - de - et - en - es - fr - hr - is - it - lv - lt - hu - nl - no - pl - pt - ro - sq - sk - sl - sr - fi - sv - el - be - bg - kk - mk - ru - uk - tr - ar

All product and company names are trademarks™ or registered® trademarks of their respective holders. Use of them does not imply any affiliation with or endorsement by them. Technical changes and delivery options are subject to change without notice. The product portfolio may be different and might vary depending on the country. Service offers are all handled individually.

## Technical Information

Loewe bild s.77	77
<b>Image</b>	
Resolution (in pixels)	Ultra HD (3840 x 2160)
Display technology	OLED (WRGB)
Screen diagonal (in cm/inch) / Response time (in ms)	195 / 77 / 1
Peak luminance (in cd/m²) / Viewing angle (h/v)	800 / 120 °
Ultra HD scaling / Image+ Active / Adaptive Contrast / 24p	●/●/—/●
HDR (HLG / HDR10 / Dolby Vision™) / WCG	●/●/●/●
Video auto-dimming (VBD+) / Interior auto-dimming (OPC)	—/●
<b>Reception</b>	
DVB-T2/C/S2 HD <sup>1</sup> / Multi ATV / Unicable / Dual Channel	●/●/●/●
MPEG / MPEG2 / MPEG4 (H.264) / HEVC (H.265)	●/●/●/●
Sat over IP / DVB-C over IP	●/●
DVB radio	●
<b>Audio</b>	
Output in watts (sine / music) / driver (active + passive)	2 x 30 / 2 x 60 / 10
Acoustic speaker concept	closed bar + passive membranes
Magic moment / front firing / down firing / 2-channel crossover	●/●/—/●
Dolby: Audio / Digital / Digital Plus / Atmos / DTS: HD	●/●/●/—/—
Automatic Volume Control (AVC) / Mimi Defined™	●/●
Individual bass and treble control / Loudness	●/●
Audio out control: variable / fixed / Subwoofer	●/●/●
<b>Operation</b>	
Loewe os / Home Screen (incl. favorites)	os6 / ●
Loewe app / Vivid app / my Loewe app (all: Android + iOS)	●/—/●
Voice control by Alexa skills / Vidaa voice	●/—
Electronic Program Guide / EPG key word search	●/—
Mediatext (HbbTV) / Teletext / page memory	●/●/ 2.000
Menu languages / Context related help	● <sup>2</sup> /●
Parental Lock / Automatic turn-off / Timer	●/●/●
Instant Channel Zapping / Quick Start Mode	●/●
Number of stations in channel list incl. AV and radio	6.000
PIP (AV) <sup>3</sup> / Full PIP / Splitscreen TV:Videotext	●/●/●
Software update (via USB / Internet)	●/●
Hotel Mode (Standard / CEC / IP / RS232)	●/●/●/●
<b>Multimedia</b>	
Loewe dr+: storage capacity in GB / USB recording / timeshift	2.000 (SSD) / ●/●
Loewe dr+: streaming server / client / follow-me	●/●/●
Multi Recording / Mobile Recording / Radio Recording	●/●/●
Photo player / Music player / Video player <sup>4</sup>	●/●/●
Digital Media Renderer (incl. Ultra HD) / Bluetooth music player	●/●
Internet apps / Internet browser / Internet radio <sup>5</sup>	●/●/● (incl. search)
YouTube / Amazon prime video / Netflix / Disney+	●/●/—/—
<b>Connectivity and Interfaces</b>	
HDMI 2.0b / HDMI 2.1 <sup>6</sup>	4 x HDMI 2.0b
HDCP 2.2 / HDMI-CEC / ARC / eARC	●/●/●/—
USB / Bluetooth / Screen Mirroring (Miracast)	3 (2 x USB 3.0) / ●/●
LAN network connection / WLAN (Wi-Fi) integrated	●/●
Common Interface / CI Plus (CI+) 1.4 ECP certified <sup>7</sup>	2
Home Control: IP / RJ12 (RS232C) / IR-Link <sup>8</sup> / MU motor control	●/●/●/●
Digital audio: optical TOSLINK / Mini TOSLINK / ARC / eARC	—/●/●/—
Analogue audio out variable / fix (jack 3.5 mm)	●/●
Center speaker in (via adapter cable) / Cube connector stereo	●/—
Kensington anti theft lock	●
<b>Energy</b>	
EPREL registration No.	1238842
Power switch / Mains voltages	● / 220-240V, 50/60 Hz
Ambient Brightness Control	●
WoLAN / WoWLAN / Fast Power-On (with increased consumption)	●/●/—
<b>Dimensions</b>	
Weight (approx.) in kg without setup solution	39,3
Weight (approx.) in kg incl. standard setup solution	41,5
W* x H x D (approx.) in cm without setup solution (* incl. signature flag)	173,1 x 102,3 x 7,3
W* x H x D (approx.) in cm incl. wall mount slim (* incl. signature flag)	173,1 x 102,3 x 11,6 (WM7)
W* x H x D (approx.) in cm incl. table stand (* incl. signature flag)	173,1 x 108,0 x 39,6
VESA support	—
<b>Scope of Delivery</b>	
Speaker	klang bar s.77 (magic moment)
Setup Solution	wall mount WM7
Remote control incl. batteries	Loewe assist graphite grey
Manual / power cord	●/● (2,5 m)
Others	Apple TV 4K
<b>Optional accessories</b>	
Selection of recommended setup solutions	smart cover s.77 table stand motor s.77 floor stand motor s.77 floor stand motor v

● = included/installed — = not included / possible

<sup>1</sup> Reception of DVB-T2 HD is available in selected countries. Reception of digital channels may be limited by individual regulations from the respective broadcaster/provider.

<sup>2</sup> de - en - fr - it - es - nl - cs - el - pl - hu - fi - sl - sk - tr - sv - da - pt - ru - no - zh - ko - hr - sr - he

<sup>3</sup> AV-PIP is only available in combination with DVB-T/C/S.

<sup>4</sup> Via home network and USB.

<sup>5</sup> Incl. search function.

<sup>6</sup> Features e.g.: enhanced ARC, ALLM, VRR 48-60Hz, 4K@60Hz, 18 Gb/s

<sup>7</sup> CI Plus (CI+) is backwards compatible with CI. Functionality is dependent on module availability from the supplier.

<sup>8</sup> Only in conjunction with adapter (to be ordered separate) and selected devices (RC5, 36 kHz).

All product and company names are trademarks™ or registered® trademarks of their respective holders. Use of them does not imply any affiliation with or endorsement by them. Technical changes and delivery options are subject to change without notice. The product portfolio may be different and might vary depending on the country. Service offers are all handled individually.



## Technical Information

	<b>65</b>	<b>55</b>	<b>48</b>
<b>Image</b>			
Resolution (in pixels)	Ultra HD (3840 x 2160)	Ultra HD (3840 x 2160)	Ultra HD (3840 x 2160)
Display technology	OLED (WRGB Pixel)	OLED (WRGB Pixel)	OLED (WRGB Pixel)
Screen diagonal (in cm/inch) / Response time (in ms)	164 / 65 / 1	139 / 55 / 1	121 / 48 / 1
Peak luminance (in cd/m²) / Viewing angle (h/v)	800 / 120°	800 / 120°	800 / 120°
Ultra HD scaling / Image+ Active / Adaptive Contrast / 24p	● / — / ● / ●	● / ● / — / ●	● / ● / — / ●
HDR (HLG / HDR10 / Dolby Vision™) / WCG	● / ● / ● / ●	● / ● / ● / ●	● / ● / ● / ●
Video auto-dimming (VBD+) / Interior auto-dimming (OPC)	— / ●	— / ●	— / ●
<b>Reception</b>			
DVB-T2/C/S2 HD <sup>1</sup> / Multi ATV / Unicable / Dual Channel	● / ● / ● / —	● / ● / ● / —	● / ● / ● / —
MPEG / MPEG2 / MPEG4 (H.264) / HEVC (H.265)	● / ● / ● / ●	● / ● / ● / ●	● / ● / ● / ●
DVB radio	●	●	●
<b>Audio</b>			
Output in watts (sine / music) / driver (active + passive)	2 x 10 / 2 x 20 / 2	2 x 10 / 2 x 20 / 2	2 x 10 / 2 x 20 / 2
Acoustic speaker concept	Speaker box · bass reflex	Speaker box · bass reflex	Speaker box · bass reflex
Magic moment / front firing / down firing	— / — / ● (invisible sound)	— / — / ● (invisible sound)	— / — / ● (invisible sound)
Dolby: Audio / Digital / Digital Plus / Atmos / DTS: HD	● / ● / ● / ● / ●	● / ● / ● / ● / ●	● / ● / ● / ● / ●
Automatic Volume Control (AVC) / Mimi Defined™	● / —	● / —	● / —
Individual bass and treble control / Loudness	7-Band EQ / —	7-Band EQ / —	7-Band EQ / —
Audio out control: variable / fixed / Subwoofer	— / ● / ●	— / ● / ●	— / ● / ●
<b>Operation</b>			
Loewe os / Home Screen (incl. favorites)	os7 / ●	os7 / ●	os7 / ●
Loewe app / Vivid app / my Loewe app (all: Android + iOS)	— / ● / ●	— / ● / ●	— / ● / ●
Voice control by Alexa skills / Vidaa voice	● / ●	● / ●	● / ●
Electronic Program Guide (SI-data) / EPG key word search	● / —	● / —	● / —
Mediatext (HbbTV) / Teletext / page memory	● / ● / 792	● / ● / 792	● / ● / 792
Menu languages / Context related help	● <sup>2</sup> / ●	● <sup>2</sup> / ●	● <sup>2</sup> / ●
Parental Lock / Automatic turn-off / Timer	● / ● / ●	● / ● / ●	● / ● / ●
Instant Channel Zapping / Quick Start Mode	— / ●	— / ●	— / ●
Number of stations in channel list incl. AV and radio	10.000	10.000	10.000
PIP (AV) <sup>3</sup> / Full PIP / Splitscreen TV:Videotext	— / — / ●	— / — / ●	— / — / ●
Software update (via USB / Internet)	● / ●	● / ●	● / ●
Hotel Mode (Standard / CEC / IP / RS232)	● / — / — / —	● / — / — / —	● / — / — / —
<b>Multimedia</b>			
Loewe dr+: storage capacity in GB / USB recording / timeshift	1.000 / ● / ●	1.000 / ● / ●	1.000 / ● / ●
Photo player / Music player / Video player <sup>4</sup>	● / ● / ●	● / ● / ●	● / ● / ●
Digital Media Renderer (incl. Ultra HD) / Bluetooth music player	● / ●	● / ●	● / ●
Internet apps / Internet browser / Internet radio <sup>5</sup>	● / ● / ●	● / ● / ●	● / ● / ●
YouTube / Amazon prime video / Netflix	● / ● / ●	● / ● / ●	● / ● / ●
<b>Connectivity and Interfaces</b>			
HDMI 2.0b / HDMI 2.1 <sup>6</sup>	4 x HDMI 2.1 <sup>6</sup>	4 x HDMI 2.1 <sup>6</sup>	4 x HDMI 2.1 <sup>6</sup>
HDCP 2.2 / HDMI-CEC / ARC / eARC	● / ● / ● / ●	● / ● / ● / ●	● / ● / ● / ●
USB / Bluetooth / Screen Mirroring (Miracast)	4 (2 x USB 3.0) / ● / ●	4 (2 x USB 3.0) / ● / ●	4 (2 x USB 3.0) / ● / ●
LAN network connection / WLAN (Wi-Fi) integrated	● / ●	● / ●	● / ●
Common Interface / CI Plus (CI+) 1.4 ECP certified <sup>7</sup>	1	1	1
Digital audio: optical TOSLINK / Mini TOSLINK / ARC / eARC	— / ● / ● / ●	— / ● / ● / ●	— / ● / ● / ●
Analogue audio out variable / fix (jack 3.5 mm)	— / ●	— / ●	— / ●
Center speaker in (via adapter cable) / Cube connector stereo	— / ●	— / ●	— / ●
Kensington anti theft lock	●	●	●
<b>Energy</b>			
EPREL registration No.	524664	591766	592233
Power switch / Mains voltages	— / 220-240V, 50/60 Hz	— / 220-240V, 50/60 Hz	— / 220-240V, 50/60 Hz
Ambient Brightness Control	●	●	●
WoLAN / WoWLAN / Fast Power-On (with increased consumption)	● / ● / ●	● / ● / ●	● / ● / ●
<b>Dimensions</b>			
Weight (approx.) in kg without setup solution	29,2	22,8	15,5
Weight (approx.) in kg incl. standard setup solution	35,2	28,8	21,5
W* x H x D (approx.) in cm without setup solution (* incl. signature flag)	146,0 x 85,8 x 6,4	123,6 x 73,4 x 6,4	107,7 x 61,4 x 6,4
W* x H x D (approx.) in cm incl. wall mount slim (* incl. signature flag)	146,0 x 85,8 x 8,4	123,6 x 73,4 x 8,4	107,7 x 61,4 x 8,5
W* x H x D (approx.) in cm incl. table stand (* incl. signature flag)	146,0 x 88,3 x 29,0	123,6 x 75,9 x 29,0	107,7 x 66,9 x 29,0
VESA support	300 x 200	300 x 200	300 x 200
<b>Scope of Delivery</b>			
Speaker	invisible sound (separated)	invisible sound (separated)	invisible sound (separated)
Setup Solution	table stand i	table stand i	table stand i
Remote control incl. batteries	Loewe remote	Loewe remote	Loewe remote
Manual / power cord	● / ● (2,5 m)	● / ● (2,5 m)	● / ● (2,5 m)
<b>Optional accessories</b>			
Selection of recommended setup solutions	floor2ceiling stand, floor stand flex, wall mount slim 432, wall mount universal		

● = included/installed — = not included / possible

<sup>1)</sup> Reception of DVB-T2 HD is available in selected countries. Reception of digital channels may be limited by individual regulations from the respective broadcaster/provider. UK models are Freeview HD compliant.

<sup>2)</sup> bs · cs · da · de · et · en · es · fr · hr · is · it · lv · lt · hu · nl · no · pl · pt · ro · sq · sk · sl · sr · fi · sv · el · be · bg · kk · mk · ru · uk · tr · ar

<sup>3)</sup> AV-PIP is only available in combination with DVB-T/C/S.

<sup>4)</sup> Via home network and USB.

<sup>5)</sup> Incl. search function.

<sup>6)</sup> Features e.g.: enhanced ARC, ALLM, VRR 48-60Hz, 4K@60Hz, 18 Gb/s

<sup>7)</sup> CI Plus (CI+) is backwards compatible with CI. Functionality is dependent on module availability from the supplier.

All product and company names are trademarks™ or registered® trademarks of their respective holders. Use of them does not imply any affiliation with or endorsement by them. Technical changes and delivery optionsare subject to change without notice. The product portfolio may be different and might vary depending on the country. Service offers are all handled individually.

## Technical Information

	<b>43</b>	<b>32</b>
<b>Image</b>		
Resolution (in pixels)	Ultra HD (3840 x 2160)	Full HD (1920 x 1080)
Display technology	LCD + E-LED (semi mat)	LCD + E-LED (semi mat)
Screen diagonal (in cm/inch) / Response time (in ms)	108 / 43 / 8	81 / 32 / 6,5
Peak luminance (in cd/m²) / Viewing angle (h/v)	>500 / 178°	>400 / 178°
Ultra HD scaling / Image+ Active / Adaptive Contrast / 24p	● / — / ● / ●	— / — / ● / ●
HDR (HLG / HDR10 / Dolby Vision™) / WCG	● / ● / ● / ●	● / ● / — / ●
Video auto-dimming (VBD+) / Interior auto-dimming (OPC)	— / ●	— / ●
<b>Reception</b>		
DVB-T2/C/S2 HD / Multi ATV / Unicable / Dual Channel	● <sup>1</sup> / ● / ● / —	● <sup>1</sup> / ● / ● / —
MPEG / MPEG2 / MPEG4 (H.264) / HEVC (H.265)	● / ● / ● / ●	● / ● / ● / ●
DVB radio	●	●
<b>Audio</b>		
Output in watts (sine / music) / driver (active + passive)	2 x 15 / 2 x 30 / 4	2 x 15 / 2 x 30 / 4
Acoustic speaker concept	Speaker box + bass reflex	Speaker box + bass reflex
Magic moment / front firing / down firing / 2-channel crossover	— / ● / — / —	— / ● / — / —
Dolby: Audio / Digital / Digital Plus / Atmos / DTS: HD	● / ● / ● / ● / ●	● / ● / ● / ● / ●
Class-D amp / Automatic Volume Control (AVC) / Mimi Defined™	● / ● / —	● / ● / —
Individual bass and treble control / Loudness	7-Band EQ / —	7-Band EQ / —
Audio out control: variable / fixed / Subwoofer	— / ● / ●	— / ● / ●
<b>Operation</b>		
Loewe os / Home Screen (incl. favorites)	os7 / ●	os7 / ●
Loewe app / Vivid app / my Loewe app (all: Android + iOS)	— / ● / ●	— / ● / ●
Voice control by Alexa skills / Vidaa voice	● / ●	● / ●
Electronic Program Guide / EPG key word search	● / —	● / —
Mediatext (HbbTV) / Teletext / page memory	● / ● / 792	● / ● / 792
Menu languages / Context related help	● <sup>2</sup> / ●	● <sup>2</sup> / ●
Parental Lock / Automatic turn-off / Timer	● / ● / ●	● / ● / ●
Instant Channel Zapping / Quick Start Mode	— / ●	— / ●
Number of stations in channel list incl. AV and radio	10.000	10.000
PIP (AV) <sup>3</sup> / Full PIP / Splitscreen TV:Videotext	— / — / ●	— / — / ●
Software update (via USB / Internet)	● / ●	● / ●
Hotel Mode (Standard / CEC / IP / RS232)	● / — / — / —	● / — / — / —
<b>Multimedia</b>		
Loewe dr+: storage capacity in GB / USB recording / timeshift	— / ● / ●	— / ● / ●
Photo player / Music player / Video player <sup>4</sup>	● / ● / ●	● / ● / ●
Digital Media Renderer (incl. Ultra HD) / Bluetooth music player	● / ●	● / ●
Internet apps / Internet browser / Internet radio	● / ● / ● (via app)	● / ● / ● (via app)
YouTube / Amazon prime video / Netflix / Disney+	● / ● / ● / ●	● / ● / ● / ●
<b>Connectivity and Interfaces</b>		
HDMI 2.0b / HDMI 2.1 <sup>6</sup>	4 x HDMI 2.1	3 x HDMI 2.1
HDCP 2.2 / HDMI-CEC / ARC / eARC	● / ● / ● / ●	● / ● / ● / ●
USB / Bluetooth / Screen Mirroring (Miracast)	2 (1 x USB 3.0) / ● / ●	2 (1 x USB 3.0) / ● / ●
LAN network connection / WLAN (Wi-Fi) integrated	● / ●	● / ●
Common Interface / CI Plus (CI+) 1.4 ECP certified <sup>7</sup>	1	1
Digital audio: optical TOSLINK / Mini TOSLINK / ARC / eARC	● / — / ● / ●	● / — / ● / ●
Analogue audio out variable / fix (jack 3.5 mm)	— / ●	— / ●
Kensington anti theft lock	●	●
<b>Energy</b>		
EPREL registration No.	675621	705080
Power switch / Mains voltages	— / 220-240V, 50/60 Hz	— / 220-240V, 50/60 Hz
Ambient Brightness Control	●	●
WoLAN / WoWLAN / Fast Power-On (with increased consumption)	● / ● / ●	● / ● / ●
<b>Dimensions</b>		
Weight (approx.) in kg without setup solution	12,0	7,3
Weight (approx.) in kg incl. standard setup solution	14,8	10,0
W* x H x D (approx.) in cm without setup solution (* incl. signature flag)	97,0 x 58,9 x 6,8	72,5 x 45,6 x 7,9
W* x H x D (approx.) in cm incl. wall mount slim (* incl. signature flag)	97,0 x 58,9 x 9,6	72,5 x 45,6 x 8,4
W* x H x D (approx.) in cm incl. table stand (* incl. signature flag)	97,0 x 63,3 x 25,4	72,5 x 49,8 x 25,4
VESA support	300 x 300	100 x 100
<b>Scope of Delivery</b>		
Speaker	integrated	integrated
Setup Solution	table stand c	table stand c
Remote control incl. batteries	Loewe remote	Loewe remote
Manual / power cord	● / ● (2 m)	● / ● (2 m)
<b>Optional accessories</b>		
Selection of recommended setup solutions	floor2ceiling stand, floor stand universal, floor stand c, wall mount slim 432, wall mount universal	floor2ceiling stand, floor stand c, wall mount slim 221, wall mount universal

● = included/installed — = not included / possible

<sup>1)</sup> Reception of DVB-T2 HD is available in selected countries. Reception of digital channels may be limited by individual regulations from the respective broadcaster/provider. UK models are Freeview HD compliant.

<sup>2)</sup> bs · cs · da · de · et · en · es · fr · hr · is · it · lv · lt · hu · nl · no · pl · pt · ro · sq · sk · sl · sr · fi · sv · el · be · bg · kk · mk · ru · uk · tr · ar

<sup>3)</sup> AV-PIP is only available in combination with DVB-T/C/S.

<sup>4)</sup> Via home network and USB.

<sup>5)</sup> Incl. search function.

<sup>6)</sup> Features e.g.: enhanced ARC, ALLM, VRR 48-60Hz, 4K@60Hz, 18 Gb/s

<sup>7)</sup> CI Plus (CI+) is backwards compatible with CI. Functionality is dependent on module availability from the supplier.

All product and company names are trademarks™ or registered® trademarks of their respective holders. Use of them does not imply any affiliation with or endorsement by them. Technical changes and delivery optionsare subject to change without notice. The product portfolio may be different and might vary depending on the country. Service offers are all handled individually.



## Technical Information

### klang bar3 mr

Part number	60614D10
Power supply	AC 100 V – 240 V – 50/60 Hz
Audio output power	180W (RMS)
Power consumption in standby mode	<0,5W
Frequency response	60 Hz – 20 kHz
WLAN supported Standards	IEEE 802.11a/b/g/n
WLAN power/frequency range	Maximum power <100 mW at 2400 – 2483,5 MHz Maximum power <100 mW at 5150 - 5350 MHz Maximum power <100 mW at 5470 - 5725 MHz Maximum power <10 mW at 5725 - 5850 MHz
Bluetooth version	5.0 + EDR
Bluetooth power/frequency range	Maximum power <10 mW at 2402 - 2480 MHz
Bluetooth protocols	A2DP, AVRCP
USB playable files	MP3
Device dimensions (W x H x D)	950 x 68 x 160 mm
Device weight	5,9 kg
Remote control battery	2 x CR2032(Lithium)
Ambient temperature	5° C – 35° C
Relative humidity (non-condensing)	20 – 80%
Video passthrough	4K Video Pass-Through, Dolby Vision, HDR10, HDR10+
Audio passthrough	Dolby Atmos, Dolby Atmos Music, Dolby TrueHD, Dolby Digital, Dolby Digital Plus, DTS: X (inklusive DTS-HD, DTS-HD MA, DTS Digital Surround), DTS Virtual: X, PCM, MP3
Supported Audio formats	HDMI: DTS, DTS-HD, DTS:X, DTS Virtual:X™, Dolby Digital, Dolby Digital plus, Dolby True HD, Dolby Atmos®, LPCM 2ch/Mch, Dolby MAT OPTICAL: DTS, Dolby Digital, LPCM 2ch

### klang bar5 mr

Part number	60601D10
Power supply	AC 100 V – 240 V – 50/60 Hz
Audio output power	220W (RMS)
Power consumption in standby mode	<0,5W
Frequency response	60 Hz – 20 kHz
WLAN supported Standards	IEEE 802.11a/b/g/n
WLAN power/frequency range	Maximum power <100 mW at 2400 – 2483,5 MHz Maximum power <100 mW at 5150 - 5350 MHz Maximum power <100 mW at 5470 - 5725 MHz Maximum power <10 mW at 5725 - 5850 MHz
Bluetooth version	V4.2
Bluetooth power/frequency range	Maximale Leistung <10 mW at 2402 - 2480 MHz
Bluetooth protocols	A2DP, AVRCP
USB playable files	MP3
Device dimensions (W x H x D)	1200 x 71 x 160 mm
Device weight	6,5 kg
Ambient temperature	5° C – 35° C
Relative humidity (non-condensing)	20 – 80%
Video passthrough	4K Video Pass-Through, Dolby Vision, HDR10, HDR10+
Audio passthrough	Dolby Atmos, Dolby Atmos Music, Dolby TrueHD, Dolby Digital, Dolby Digital Plus, DTS: X (inklusive DTS-HD, DTS-HD MA, DTS Digital Surround), DTS Virtual: X, PCM, MP3
Supported Audio formats	2x HDMI, 1x eARC, OPTICAL, Line in 3,5 mm, USB

### klang sub5

Part number	60603D10
Power supply	AC 100 V – 240 V – 50/60 Hz
Audio output power	180W (RMS)
Power consumption in standby mode	<0,5W
Frequency response	35 Hz – 150 Hz
WLAN supported Standards	—
WLAN power/frequency range	Maximum power <10 mW at 5725 - 5850 MHz
Bluetooth version	V4.2
Bluetooth power/frequency range	—
Bluetooth protocols	—
USB playable files	—
Device dimensions (W x H x D)	380 x 214 x 380 mm
Device weight	8,8 kg
Ambient temperature	5° C – 35° C
Relative humidity (non-condensing)	20 – 80%
Video passthrough	—
Audio passthrough	—
Supported Audio formats	—

## Technical Information

### klang sub1

Part number	60610D10
Power supply	AC 100 V – 240 V – 50/60 Hz
Power consumption in standby mode	<0,5W
Audio output power	2 x 50W
Speaker equipment	2 x 4 inch woofer + 4 x 4 inch passive speaker
Frequency response (electrical)	20 – 300 Hz
Frequency response (acoustical)	40 – 100 Hz
Bluetooth version	V5.0
Bluetooth power/frequency range	Maximum power <10 mW at 2402 - 2480 MHz
Bluetooth protocols	A2DP, AVRCP, aptX Low Latency
Device dimensions (W x H x D)	287 x 158 x 287 mm
Device weight	4,6 kg
Ambient temperature	5° C – 35° C
Relative humidity (non-condensing)	20 – 80 %
Connection	Bluetooth, Line-in (3,5 mm)

### klang mr1

Part number	60604D11
Power supply	AC 100 V – 240 V – 50/60 Hz
Music output power	30W
Power consumption in standby mode	<0,3W
Power consumption in networked standby mode	4,0 – 7,0W
Frequency response	55Hz – 20kHz
WLAN supported Standards	IEEE 802.11a/b/g/n
WLAN power/frequency range	Maximum power <100mW at 2400 – 2483,5 MHz Maximum power <100mW at 5150 – 5350 MHz Maximum power <100mW at 5470 – 5725 MHz Maximum power <100mW at 5725 – 5850 MHz
Bluetooth version	V4.2
Bluetooth power/frequency range	Maximum power <10mW at 2402 – 2480 MHz
Bluetooth protocols	A2DP, AVRCP
Device dimensions (W x H x D)	160 x 188 x 154 mm
Device weight	1,2 kg
Ambient temperature	5° C – 35° C
Relative humidity (non-condensing)	20 – 80%
Comments	inkl. Wall Mount

### klang mr3

Part number	60605D10
Power supply	AC 100 V – 240 V – 50/60 Hz
Music output power	150W
Power consumption in standby mode	<0,3W
Power consumption in networked standby mode	4,0 – 7,0W
Frequency response	41Hz – 20kHz
WLAN supported Standards	IEEE 802.11a/b/g/n
WLAN power/frequency range	Maximum power <100mW at 2400 – 2483,5 MHz Maximum power <100mW at 5150 – 5350 MHz Maximum power <100mW at 5470 – 5725 MHz Maximum power <100mW at 5725 – 5850 MHz
Bluetooth version	—
Bluetooth power/frequency range	Maximum power <10mW at 2402 – 2480 MHz
Bluetooth protocols	A2DP, AVRCP
Device dimensions (W x H x D)	196 x 321 x 187 mm
Device weight	3,2 kg
Ambient temperature	5° C – 35° C
Relative humidity (non-condensing)	20 – 80%
Comments	—

### klang mr5

Part number	60606D10
Power supply	AC 100 V – 240 V – 50/60 Hz
Music output power	180W
Power consumption in standby mode	<0,3W
Power consumption in networked standby mode	4,0 – 7,0W
Frequency response	36Hz – 20kHz
WLAN supported Standards	IEEE 802.11a/b/g/n
WLAN power/frequency range	Maximum power <100mW at 2400 – 2483,5 MHz Maximum power <100mW at 5150 – 5350 MHz Maximum power <100mW at 5470 – 5725 MHz Maximum power <100mW at 5725 – 5850 MHz
Bluetooth version	—
Bluetooth power/frequency range	Maximum power <10mW at 2402 – 2480 MHz
Bluetooth protocols	A2DP, AVRCP
Device dimensions (W x H x D)	225 x 401 x 215 mm
Device weight	4,4 kg
Ambient temperature	5° C – 35° C
Relative humidity (non-condensing)	20 – 80%
Comments	—

### klang s1

Part number	60608D10 - Basalt grey, 60608S10 - Light grey
Audio output power	AC 100 V – 240 V – 50/60 Hz
Power supply	2 x 20W
Power consumption in standby mode	<1,0W
DAB tuning range BAND III	174,928 MHz – 239,200 MHz
UKW	87,50 MHz – 108,00 MHz
WLAN supported Standards	IEEE 802.11a/b/g/n
WLAN power/frequency range	Maximum power <100 mW bei 2412 - 2472 MHz Maximum power <100 mW bei 5180 - 5320 MHz Maximum power <100 mW bei 5500 - 5700 MHz
WLAN supported encryption	WEP, WPA, WPA2 (PSK), WPS
WLAN supported streaming formats	MP3, AAC / AAC + (bis zu 48 kHz, 16 Bit)
Bluetooth version	V4.2
Bluetooth power/frequency range	Maximum power <10 mW at 2402 - 2480 MHz
Bluetooth protocols	A2DP, AVRCP
USB playable files	MP3 (Bit rates: 32 - 320 kBit/s)
CD formats	CD-DA, CD-R, CD-RW, MP3; (nur 12-cm-Disc)
Device dimensions (W x H x D)	460 x 160 x 90 mm
Device weight	4,8 kg
Ambient temperature	5° C – 35° C

### klang s3

Part number	60607D10 - Basaltgrau, 60607S10 - Lichtgrau
Audio output power	AC 100 V – 240 V – 50/60 Hz
Power supply	2 x 30W
Power consumption in standby mode	<1,0W
DAB tuning range BAND III	174,928 MHz – 239,200 MHz
UKW	87,50 MHz – 108,00 MHz
WLAN supported Standards	IEEE 802.11a/b/g/n
WLAN power/frequency range	Maximum power <100 mW bei 2412 - 2472 MHz Maximum power <100 mW bei 5180 - 5320 MHz Maximum power <100 mW bei 5500 - 5700 MHz
WLAN supported encryption	WEP, WPA, WPA2 (PSK), WPS
WLAN supported streaming formats	MP3, AAC / AAC + (bis zu 48 kHz, 16 Bit)
Bluetooth version	V4.2
Bluetooth power/frequency range	Maximum power <10 mW at 2402 - 2480 MHz
Bluetooth protocols	A2DP, AVRCP
USB playable files	MP3 (Bit rates: 32 - 320 kBit/s)
CD formats	—
Device dimensions (W x H x D)	335 x 120 x 90 mm
Device weight	3,1 kg
Ambient temperature	5° C – 35° C

All product and company names are trademarks™ or registered® trademarks of their respective holders. Use of them does not imply any affiliation with or endorsement by them.  
Google and Chromecast built-in are trademarks of Google LLC.

Specifications in mm: W = width, H = height, D = depth of the product

All product and company names are trademarks™ or registered® trademarks of their respective holders. Use of them does not imply any affiliation with or endorsement by them.  
Google and Chromecast built-in are trademarks of Google LLC.

Specifications in mm: W = width, H = height, D = depth of the product

100 years

---

1 9 2 3 - 2 0 2 3

**LOEWE.**