



# Loewe **klang bar3 mr**

Soundbar with integrated subwoofer

Active 3.1 Dolby Atmos soundbar with integrated twin-drive subwoofer

360 watts total music power and 9 active drivers

Dolby Atmos, DTS:X and HDMI eARC support

Expandable to discrete 5.1 home cinema via Loewe wireless digital audiolink

Multiroom via DTS Play-Fi, Apple AirPlay and Google Cast

Integrated 5.1 home cinema AV receiver with cinch out for external active speakers

Fits perfectly with TVs of 43 inches and larger



LOEWE. was found by the brothers Loewe as Radio Frequenz GmbH in Berlin in 1923.

Today we still design, develop and produce consumer electronics – Made in Germany.

bild – is the German word for picture or image.

klang – is the German word for sound or tone.

Data sheet

Loewe **klang bar3 mr**

April 2023

**LOEWE.**

loewe.tv     



# Loewe **klang bar3 mr**

Soundbar with integrated subwoofer



**AVR adapter function.**

Using the AVR connections, active speakers and active amplifiers with connected passive speakers of older generations and from any brand can be connected to the Loewe klang bar3 mr without an additional adapter. The speakers connected by cable are conveniently activated via the soundbar.



**Multichannel and Multiroom.**

Three HDMI connections and 4K pass-through leave nothing to be desired when connecting to UHD players, set-top boxes and game consoles. The 5.1 multichannel platform with Dolby Atmos support and the multiroom system with DTS Play-Fi makes expanding the system a breeze, as additional Loewe klang mr speakers can be added to the existing setup in seconds.



**Streaming.**

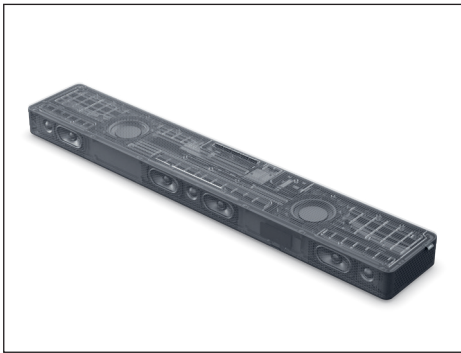
Apple AirPlay 2, Google Chromecast and Bluetooth provide a variety of services such as Spotify, Amazon Music, Tidal, Deezer and Internet radio. Stream your favourite content at the touch of a button.



**Powerful cinema sound.**

Enjoy this masterpiece of German engineering for absolute audio pleasure with best clarity and voluminous cinema sound.

This active 3.1 soundbar with seven front-firing speakers and a built-in twin-drive subwoofer delivers a total music output of 360 watts for a room-filling and natural sound experience - including support of Dolby Atmos, Dolby Atmos Music, DTS:X as well as multiroom via DTS Play-Fi, Apple AirPlay and Google Cast, or via Loewe wireless digital audiolink (second generation) and AV Receiver pre-amp cinch out connections.



**Integrated twin-drive subwoofer.**

Two parallel, up-firing subwoofers with 4-inch drivers and bass reflex ports to the left and right provide an ambient, wide and unobtrusive bass foundation, always ready to give the necessary deep punch to strong musical expressions or film explosions..

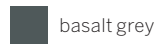


**Expandable system.**

The soundbar can be expanded with additional Loewe klang mr speakers. Within seconds, klang mr1, klang mr3 or klang mr5 can be added wirelessly to an existing setup, whether for multi-channel home cinema, multi-room audio or even both at the same time.

At the same time, the system is compatible in all directions thanks to open standards. Whether thirdparty speakers, Loewe klang 5 or klang 9, or even the former Loewe Individual Sound System with active subwoofers and electrostatic speakers - almost anything can be connected to the klang bar3 mr.

**Colour**



basalt grey

**Model**

klang bar3 mr

**Article no.**

60614

# Loewe **klang bar3 mr**


Soundbar with integrated subwoofer

## Setup solutions

### Loewe floor stand flex

Floor stand for bild v, bild i, bild c and We. SEE in combination with klang bar5 mr and klang bar3 mr  
W x H x D = 54,0 x 73,5 x 54,0 cm  
Weight = 23,5 kg  
manually rotatable (+/-45°), concealed cable guide, with equipment board for accessories and adapter for sound bar

### Colour

 basalt grey



### Model

floor stand flex

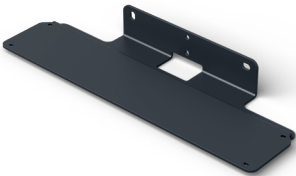
### Article no.

60800

### Loewe wall mount klang bar

Wall mount for mounting the Loewe klang bar5 mr or Loewe klang bar3 mr  
W x H x D = 40 x 5 x 13,2 cm  
Weight = 1,2 kg

 black



wall mount klang bar

60810

### Loewe spacer table stand v

Spacer between TV and table stand  
W x H x D = 5,2 x 5,7 x 5,2 cm  
Weight = 0,8 kg

 black




spacer table stand v

60811

### Loewe spacer table stand i

Spacer between TV and table stand  
W x H x D = 5,3 x 6,3 x 5,3 cm  
Weight = 0,2 kg

 basalt grey




spacer table stand i

60812

## Accessory

### Loewe klang mr5

Wireless active speakers with 180 watts for multichannel home cinema or multiroom audio

 basalt grey




klang mr5

60606

### Loewe klang mr3

Wireless active speakers with 150 watts for multichannel home cinema or multiroom audio

 basalt grey




klang mr3

60605

### Loewe klang mr1

Wireless active speakers with 30 watts as rear surround or for multiroom audio

 basalt grey




klang mr1

60604

### Loewe klang sub5

Any number of klang sub5 can be connected to a klang bar3 mr or klang bar5 mr at the same time

 basalt grey



klang sub5

60603

Data sheet

Loewe **klang bar3 mr**

April 2023

# Loewe klang bar3 mr

Soundbar with integrated subwoofer



All product and company names are trademarks™ or registered® trademarks of their respective holders. Use of them does not imply any affiliation with or endorsement by them. Google and Chromecast built-in are trademarks of Google LLC.

Technical data	
Loewe klang	bar3 mr
Audio	
Acoustic speaker concept	closed bar incl. twin drive sub
Channel configuration (speaker layout)	3.1 (surround)
Output (watts sine / music)	180 / 360
Driver (active + passive)	9
Orientation front / side / up / rear firing	● / ● / — / —
2-channel crossover	● active
Class-D amp	●
Frequency range (Hz)	50-20.000
Dolby Audio / Digital / Digital Plus / Volume / Atmos / Atmos Music	● / ● / ● / ● / ● / ●
DTS HD / DTS:X	● / ●
Individual bass and treble control / Loudness	● (remote) / dynamic
Display	
Screen resolution (pixels)	5 x 16 segments
Display technology	White D-LED
Screen diagonal (cm/inch)	6 / 2,4
Operation	
Smart apps (all: Android + iOS)	DTS Play-Fi, my Loewe app
Voice control by Alexa skills	●
Software update (via USB / Internet)	● / ● (DTS Play-Fi)
Multimedia	
Music player	●
Bluetooth music player	●
FM / DAB+ / Internet radio	● (via DTS Play-Fi app)
DTS Play-Fi	●
Spotify Connect / Google Cast / Apple AirPlay	● / ● / ●
Multiroom audio support	●
Multichannel home cinema support	● (5.1)
Connectivity and Interfaces	
HDMI	2 x HDMI 2.0b (incl. 4K pass-through)
HDCP 2.2 / HDMI-CEC / ARC / eARC	● / ● / ● / ●
USB	1 x USB 2.0
Bluetooth	●
WLAN (Wi-Fi) integrated	●
Wireless Digital Audiolink (second generation)	●
Optical TOSLINK	●
AV receiver analog pre-amp out (5.1 Cinch)	●
Analogue audio in (3.5 mm jack)	● (line in)
Network	
WLAN (Wi-Fi) standard	IEEE 802.11a/b/g/n/ac
WLAN (Wi-Fi) power (max. mW)	<100
WLAN (Wi-Fi) frequency range	2400-2483,5 / 5150-5725 MHz
WLAN (Wi-Fi) encryption	WEP 64, 128 Bit (ASCII, HEX)
WLAN (Wi-Fi) encryption WPA	WPA PSK, WPA2 AES, WPS
Bluetooth standard	5.0 + EDR
Bluetooth power (max. mW)	<10
Bluetooth frequency range	2,4 GHz
Bluetooth protocols	A2DP, SNK, AVRCP
Formats	
Supported audio formats	MP3, AAC, AAC+, M4A, WAV, FLAC, PCM, Dolby True HD, Dolby Audio, Dolby Digital, Dolby, Digital Plus, Dolby Atmos, Dolby Atmos Music, DTS, DTS HD, DTS Virtual X, DTS Play-Fi
Supported video formats	4K Video Pass-Through, Dolby Vision, HDR10, HDR10+
Energy	
Mains voltages AC	100-240V, 50/60 Hz
Power consumption standby / network standby (watts)	<0,5 / 6
Environment	
Ambient temperature while in operation	5-35° C
Relative humidity (non-condensing)	20-80%
Dimensions	
Weight (approx. kg) excl. / incl. standard setup solution	5,9
W* x H x D (approx. cm) without setup solution (* incl. signature flag)	95,0 x 7,1 x 16,0
Scope of Delivery	
Remote control (incl. batteries)	Loewe remote klang mr (2x CR2032)
Manual / power cord	● / ●
Others	HDMI cable
Optional accessories	
Selection of recommended setup solutions and audio systems	floor stand flex, spacer table stand v, spacer table stand v wall mount klang bar, klang mr5, klang mr3, klang mr1, klang sub5

● = available — = not available  
Technical changes and delivery options are subject to change without notice. The product portfolio may be different and might vary depending on the country. Service matters are all handled individually.